

Washington Office Location

21850 88th Place South

Kent, WA 98031

Office: (253) 872-2000

Fax: (253) 872-7033

Email: info@nwindustrialrepair.com



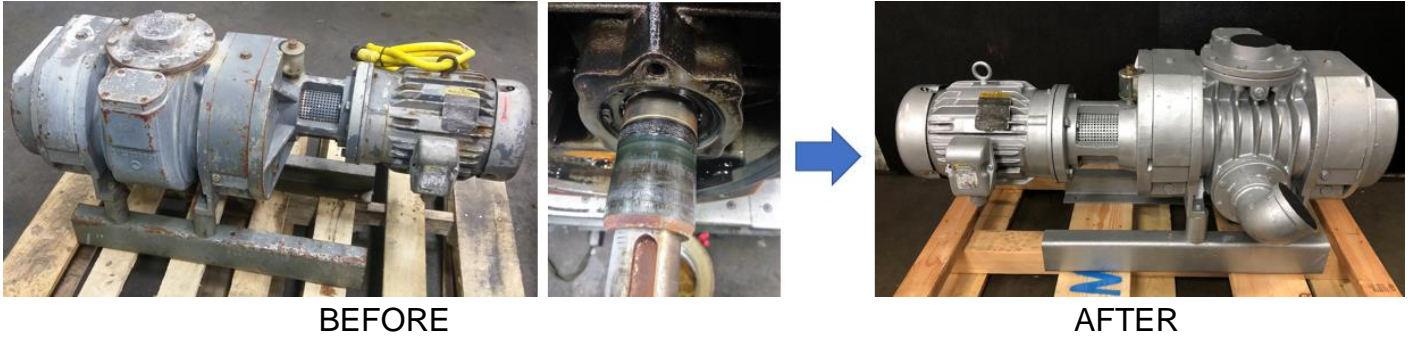
Additional Locations

Eastern Washington: (509) 949-3368

Idaho & Montana: (208) 360-3833

Oregon: (503) 708-9609

RECONDITIONING A BUSCH PANDA WV VACUUM BOOSTER



- Base repair quote supplied to customer prior to receiving the equipment
- Complete visual inspection and disassembly of booster and components
 - Drive shaft seal sleeve worn
- Pictures of tear down taken and included in firm quote with detailed description of required repairs
- Firm quote submitted to customer for approval prior to continuance of work
- Complete mechanical and chemical cleaning of all internal components and external surfaces
 - Installation of all new seals, bearings, gaskets and O-rings
 - Replace drive shaft seal sleeve
 - Replace sight glasses
 - Replace motor bearings
- Set internal clearances to factory specs
- 60-minute test run of complete assembly with data acquisition program
- After break-in period has been met, system is helium leak-checked
- Copy of test data acquisition pump down curve included in shipping documents
- Prep, paint and palletize for shipment