

Washington Office Location21850 88th Place South

Kent, WA 98031

Office: (253) 872-2000

Fax: (253) 872-7033

Email: info@nwindustrialrepair.com

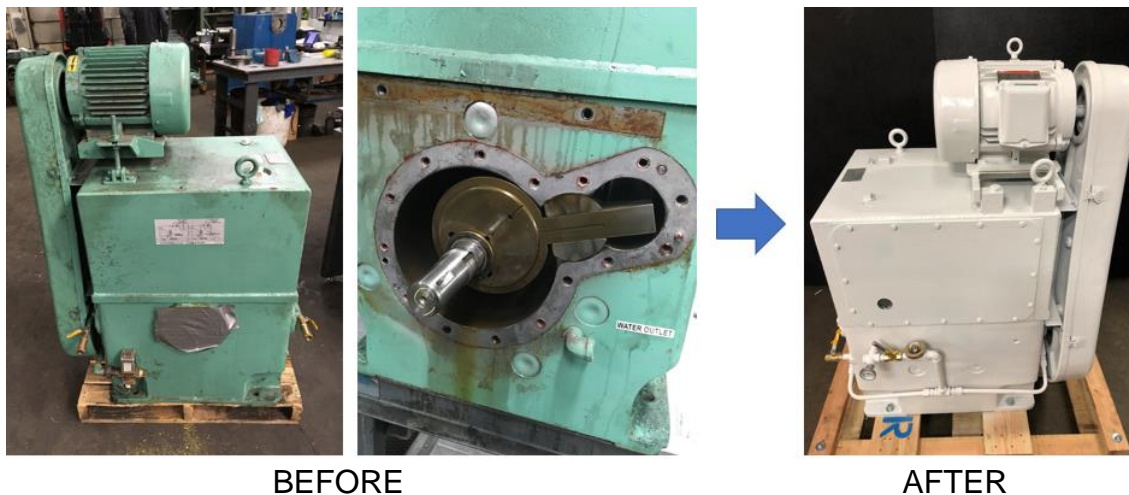
**Additional Locations**

Eastern Washington: (509) 949-3368

Idaho & Montana: (208) 360-3833

Oregon: (503) 708-9609

RECONDITIONING A STOKES 412H ROTARY PISTON PUMP



BEFORE

AFTER

- Base repair quote supplied to customer prior to receiving the equipment
- Complete visual inspection and disassembly of piston pump and components
 - Center bearing failed
- Pictures of tear down taken and included in firm quote with detailed description of required repairs
- Firm quote submitted to customer for approval prior to continuance of work
- Complete mechanical and chemical cleaning of all internal components and external surfaces
 - Bore and sleeve bearing bores
 - Bore block
 - Machine new hinge bars and spacers
 - Installation of all new seals, bearings, gaskets, O-rings, poppets, springs, belts and sight glasses
 - Install new eccentric keys
 - Replace shaft shoulder rings, solenoid valve and temperature gauge
 - Replace motor bearings
 - Install water miser
- Set internal clearances to factory specs
- 60-minute test run of complete assembly with data acquisition program
- After break-in period has been met, system is helium leak-checked
- Copy of test data acquisition pump down curve included in shipping documents
- Prep, paint and palletize for shipment