

Washington Office Location

21850 88th Place South

Kent, WA 98031

Office: (253) 872-2000

Fax: (253) 872-7033

Email: info@nwindustrialrepair.com



Additional Locations

Eastern Washington: (509) 949-3368

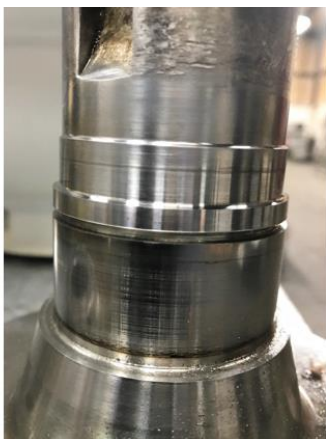
Idaho & Montana: (208) 360-3833

Oregon: (503) 708-9609

RECONDITIONING A KICE PD5000 6008-88L2 BLOWER



BEFORE



AFTER

- Base repair quote supplied to customer prior to receiving the equipment
- Complete visual inspection and disassembly of blower and components
 - Wear noted on drive shaft seal race
- Pictures of tear down taken and included in firm quote with detailed description of required repairs
- Firm quote submitted to customer for approval prior to continuance of work
- Complete mechanical and chemical cleaning of all internal components and external surfaces
 - Ceramic coat drive shaft seal race
 - Installation of all new seals, bearings, gaskets, O-rings, timing shims and piston rings
 - Replace oil sight glasses
 - Install sight glass spacers
- Set internal clearances to factory specs
- 60-minute test run of complete assembly
- Prep, paint and palletize for shipment